

WoW Parent Forum is on every first Monday of the month from 12 -1pm

WoW Enterprise Club Zoom networking every Wednesday from 10am—11am

WoW weekly Inter-Generational food deliveries

WoW Karate Every Saturday term time from 10am-12

NEXT MONTH:

INTERNATIONAL WOMEN'S DAY

WOW KARATE

FREE FOOD

PARENT FORUM

EDITOR AND PUBLISHER:

SENIA DEDIC BEM

Parliament Outreach

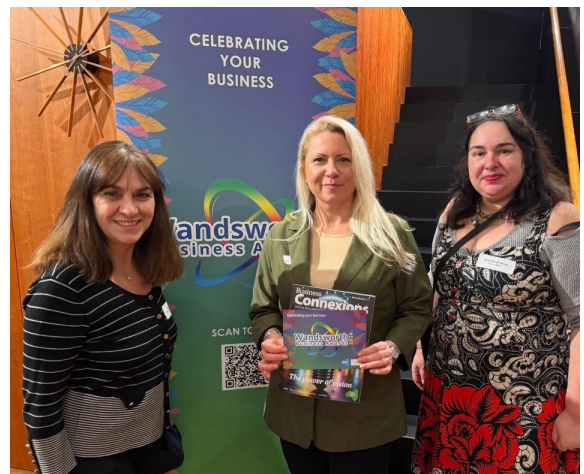


Women of Wandsworth have been invited to Your Community Your UK Parliament Teams meeting with Damien Arness-Dalton, organised by KFT Community Organisation. This Parliamentary Outreach webinar reminded us of our rights as citizens and voters, who elect the MPs and form the Government. Damien, London

Outreach Officer, works for the Education and Engagement Team at the UK Parliament. As an impartial officer. Damien travels across London, visiting people and community organisations to explain how Parliament works, sharing ways we can participate and have our voices heard.

Wandsworth Chamber of Commerce

WoW Enterprise Club attended Wandsworth Business Awards launch in Battersea Power Station Engine Room with CEO Beverly Corson. There are 14 categories to nominate your business for an award and gain recognition by showcasing your business strengths and achievements. Spectacular awards ceremony, in true Oscar style, is in June at the iconic Clapham Grand. This is not just a fun nights, but also a fantastic opportunity to network in style.



Free Food For Elderly



WoW Mums are very worried about our elderly neighbors, who cannot carry a lot of food from the shops, since they are weak and suffer from chronic illnesses. Current triple threat economic situation in the country is not easily managed by older people, with the post Brexit, post Pandemic and High cost

of living crisis. That is why we are so grateful for our volunteer driver Joe Wiczorek for delivering free food every week to John Kirk and Holmleigh Court lodge in Battersea, with the donations from A&P Foundation. Thank you so much to our funders, for making WoW Inter-generational Project so helpful.

**THANK YOU TO
THOMAS'S
FOUNDATION
FOR THEIR
GRANT**

WoW Karate classes for children are useful extracurricular activity to develop self defense against bullying. They are on every Saturday at St. Peter's centre from 10am—12. Please contact WoW Mums if you wish to join the class.

WoW Karate



**THANK YOU TO
SW LONDON
NHS FOR THE
COMMUNITY
GRANT**

Osteophagy



Osteophagy Cancer starts in the gullet and spreads to the stomach. It can be difficult to treat if not spotted early. WoW Mums have joined the HNS campaign to raise awareness of rare cancers to save lives. Symptoms are heartburn, indigestion and weight loss.

Battersea Together

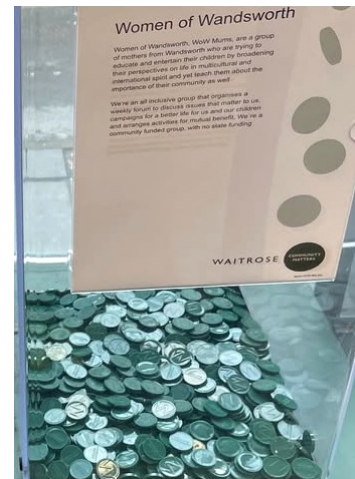
Women of Wandsworth attended the Battersea Together event, organised by Big Local SW11, funded by the National Lottery. This event brought together local people and organisations to share ideas and tackle challenges in our community. As a result of these events, Battersea Alliance was formed, built on trust, collaboration and the belief that Battersea is stronger when we work together.



Waitrose Donations

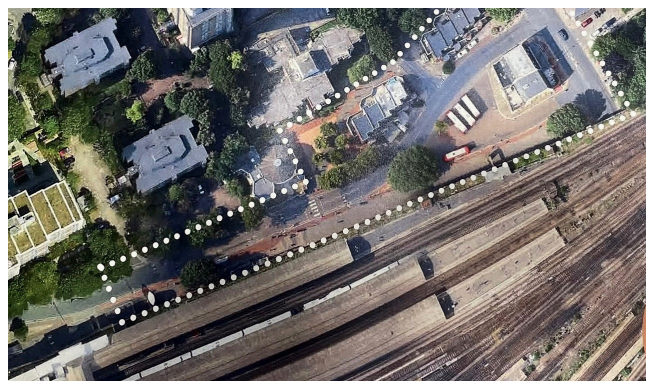
WoW Mums have been chosen by Waitrose to collect green tokens for our community organisation this month, as part of their 'Community Matters' scheme. Waitrose would like to give something back and help make a difference to local people through their greatest love: food. They are helping small

community organisations and food banks to make sure that nobody is hungry in our neighborhood and they support people like us who deliver free food to elderly and tackle isolation and loneliness through our community social events at the lodges and sheltered accommodations.



**THANK YOU TO
A&P
FOUNDATION
FOR THE
FUNDING**

Clapham Junction Station



Wandsworth Council is working with Network Rail and TfL on Clapham Junction station upgrade, which is needed to make the station better by making a new entrance, new overbridge and a new subway underpass. WoW Mums suggested to put information in brail on platform handrails.